

**MONUMENT RECORD**  
State of Indiana - County of Monroe

**Section:** 26

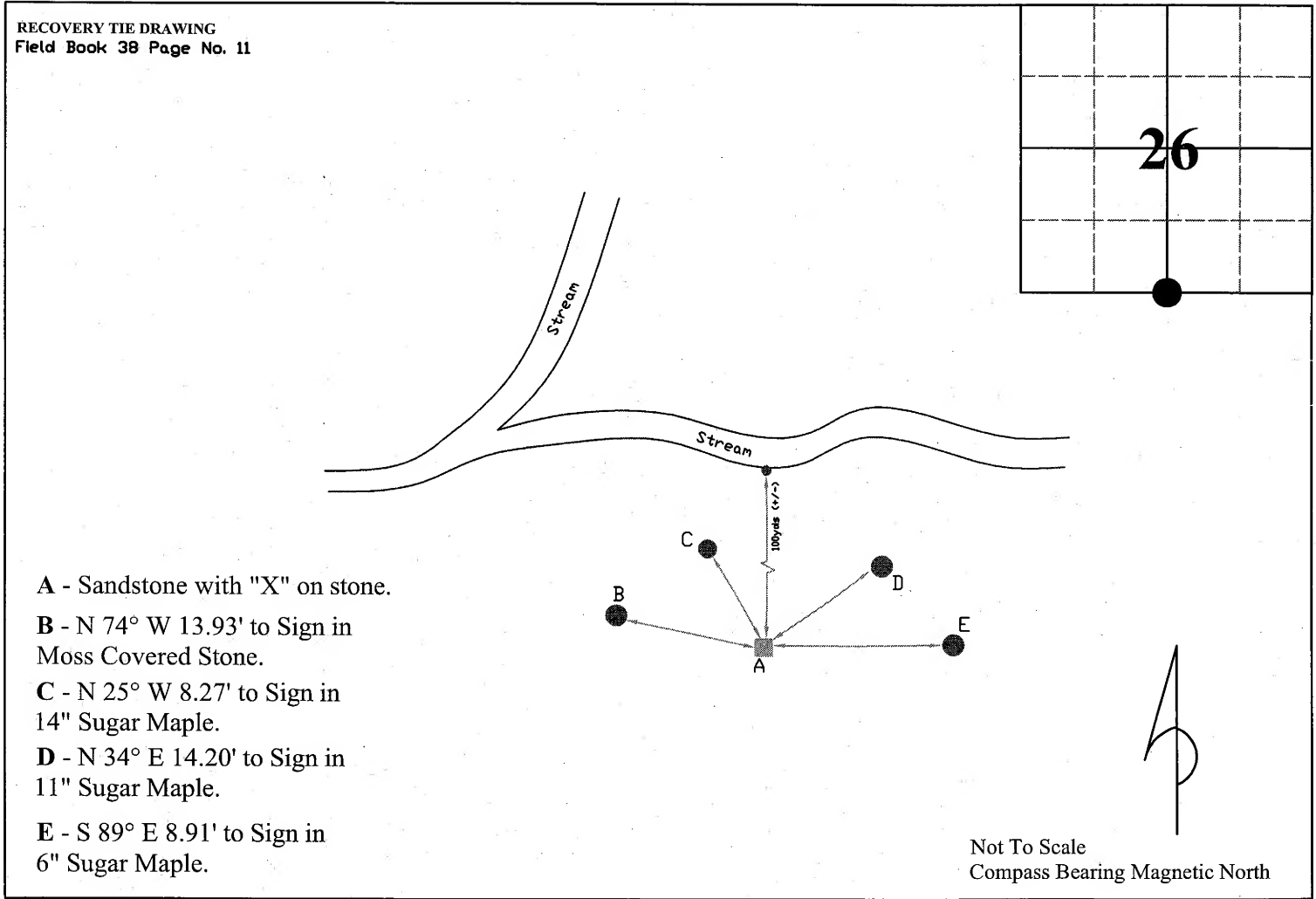
**Township:** 8 North

**Range:** 1 East

**Corner ID:** SaCr S-21

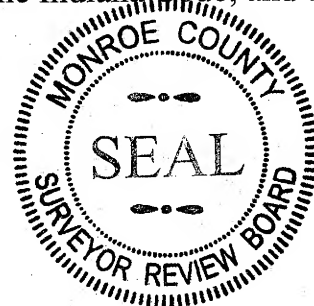
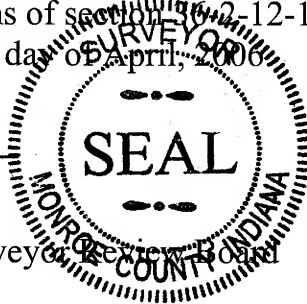
**Monument Description & Remarks:** Sandstone with "X" on top of stone. Survey Sign 5ft A.G. at Pt. (E)

**References On File:** Legal Survey Book 2 page no. 47 survey (1874), & page no. 261-262 survey (1877) on file in Surveyors office; Bledsoe Tapp & Riggert., Inc. survey, U.S.D.A Forest Service (2003), on file in Surveyors office & Recorders office (Inst# 2003003392).



I, Kevin P. Enright, Monroe County Surveyor, hereby certify that this document was prepared under my direction in accordance with the provisions of sections 2-12-11 of the Indiana Code; and the above data is given under my hand and seal this 17th day of April, 2006.

*Kevin P. Enright*



Administered by the Monroe County Surveyor

Date: 6/16/2006

Index: V-19 Corner: S 1/4 S. 26 LAND CORNER RECORD

167 SAC S-21  
 State of Indiana  
 Hoosier National Forest  
 Monroe

1/4 Sec 26 N Range 1 E Section 26 2nd P.M. County: MONROE

EXISTING SURVEYS

Original Government Survey

Original Survey Evidence Found

Year Surveyed:	1814	By:	Arthur Henrie	Date of Search:	Nov. 2002	By:	E.D. D.K.
Original Monument:	wood post			Monument Found:	none		
Species	Diameter	Bearing	Distance	Species	Diameter	Bearing	Distance
Sugar	12	S14W	4L = 2.64'	none			
Beech	3	N61W	8L = 5.28'				

Subsequent Corner Restoration

Evidence of Subsequent Corner Restoration Found

Where Filed or Recorded:	MONROE County Survey Book 2	Year Searched:	2002	By:	E.D., D.K.
Book:	2	Monument Found:	fld. stone 8" x 6" x 3" tall with chiseled "+" on top		
Page:	261-262				
Date:	1877				
Monument Set:	Stone				

Species	Diameter	Bearing	Distance	Species	Diameter	Bearing	Distance
Beech	16	N61W	14L = 9.24'	none			
"	24	N75E	24L = 15.84'				

OTHER EVIDENCE

Describe corner loc. relative to nearby features & dir. to corner location, note fences, roads, etc.	Sketch of Monument
stone is firm in ground in nearly flat area stone is 12± W. of the top of a N-S± gully stone is at the NW base of a 1 1/2" MAPLE	

PERPETUATION RECORD

Monument: Describe new monument set or work done to perpetuate/preserve the existing monument/position.
Jan. 3, 2003

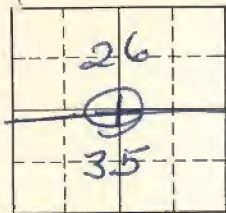
Corner Diagram	Accessories: Describe new BTs & witness objects established to perpetuate existing evidence.		
	9" MAPLE N30 E, 14.6' to center tree, blazed, scribed BT, painted red 7" OAK N77 W, 14.2' " " " " " " " " 11" MAPLE N27 W, 9.0' " " " " " " " "		
1/4 COR. 26/35	Corner Recordation:	Certificate Prepared:	E.D.
	Filed and Recorded in County records:	Date:	2003
Section: 26	Book:	Page:	
	Geodetic Coordinates:		Lat./N. 39° 05' 28.7658" Long./E. 86° 22' 41.9696"
	Edited By:	BTR	Date Created: 2/2003

## LAND CORNER RECORD

(Rectangular)

 1. T 8N R 1E No. V-19 Cor. Mer. 2d State Indiana N. F. Hoosier Dist. B'fown

2. Corner Status



7. Photo Identification

Photo No. \_\_\_\_\_

Ident. By: \_\_\_\_\_

8. Plane Coordinate Position Data

State \_\_\_\_\_ Zone \_\_\_\_\_

X \_\_\_\_\_

Y \_\_\_\_\_

Estab. By \_\_\_\_\_

Field Book No. \_\_\_\_\_

Where Filed \_\_\_\_\_

9. Evaluation

Authentic \_\_\_\_\_

Needs Verif. \_\_\_\_\_ Monument \_\_\_\_\_

Re-estab. \_\_\_\_\_ Survey \_\_\_\_\_

Land Status \_\_\_\_\_

3. Original Description \_\_\_\_\_ Vol. \_\_\_\_\_ Page \_\_\_\_\_ Where Recorded \_\_\_\_\_

4. Description of Corners:

Sandstone

5. Investigation Notes:

about 2 1/4 chains south of a stream.  
stone is on a north hillside.

6. Signed \_\_\_\_\_ Title \_\_\_\_\_ Date \_\_\_\_\_

PERPETUATION RECORD

10. Monument :

11. Accessories

Field Book \_\_\_\_\_ Page \_\_\_\_\_

12. Set By \_\_\_\_\_ Title \_\_\_\_\_

License \_\_\_\_\_ Agency \_\_\_\_\_ Date \_\_\_\_\_

13. Recorded By \_\_\_\_\_ Volume \_\_\_\_\_ Page \_\_\_\_\_  
( Agency )

( Date ) ( City ) ( County ) ( State )

14. Remarks:

T. 8 N. R. 1 E. 2 N. Mer.

(Mapa sketch of topography near Corner)



Metal Location Poster is on a Tree 30" (Hilltop)  
 tree 30 inches diameter, on the  
 side of WINDY + ONE PINE  
 from which this Corner bears  
AND SOUTH chains distant.  
 Give any further facts which will aid in finding this  
 Corner again.

Corner 24 + 25 CLAIM STONE  
SOUTH OF A SHAW STONE  
IS ON A NORTH HILLSIDE

-----  
 CORNER OF THE BLDG. OF  
 WASHINGTON COLLEGE

19-V-V

Form 874-9—Revised May, 1918  
U. S. Department of Agriculture  
FOREST SERVICE

Mount NATIONAL FOREST

### CORNERS OF THE PUBLIC SURVEY

T. 5N R. 1E 2000 Mer.

Corner common to Sections \_\_\_\_\_, \_\_\_\_\_, \_\_\_\_\_, and 35

Corner consists of a Sandstone (not) in place

State condition \_\_\_\_\_

Dimensions above ground \_\_\_\_\_ inches  
Sketch grooves, letters, figures, or notches, on proper face or edge.

N	W	S	E	NW	SW
				SE	NE

Mound of \_\_\_\_\_ is located \_\_\_\_\_

Pits are located \_\_\_\_\_  
Sketch markings of Bearing Trees (or Rocks) in proper box and fill blanks below, giving bearings from Corner to Trees and Distances in Links.


Species \_\_\_\_\_  
Diameter \_\_\_\_\_  
Bearing \_\_\_\_\_  
Distance \_\_\_\_\_

Do you believe this to be a genuine Land Office Corner?  
If not, why? \_\_\_\_\_

\_\_\_\_\_  
(Signature)  
12-11-76  
(Date)